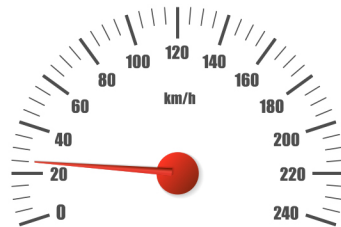


WHAT TYPES OF MOPEDS MUST FOLLOW THE SAME LAWS AS CARS?

MOTOR-DRIVEN CYCLES THAT TRAVEL MORE THAN 20 MPH/32 KPH MUST COMPLY WITH VEHICLE REGULATIONS.



WHAT DO YOU NEED TO LEGALLY DRIVE A MOPED IN DC?

- DRIVER'S LICENSE
- REGISTRATION
- INSURANCE
- HELMET

~~49CC NO LICENSE
PLATE REQUIRED~~



IF YOU HAVE A MOPED, YOU NEED A LICENSE PLATE.

Website: dmv.dc.gov/limitedlicense dmv.dc.gov/nontraditionalvehicles